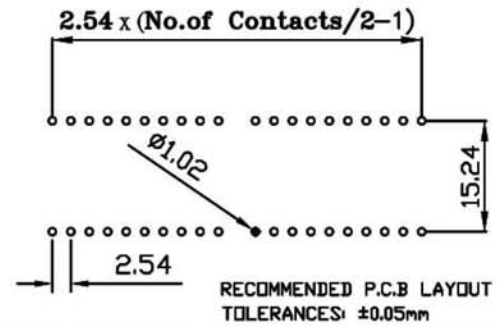
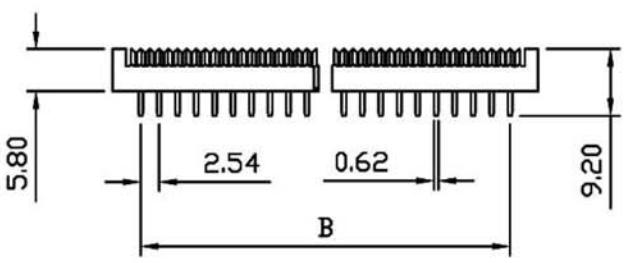
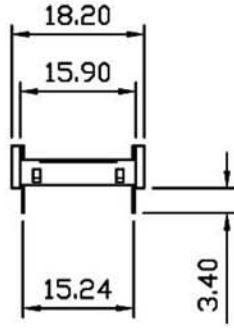
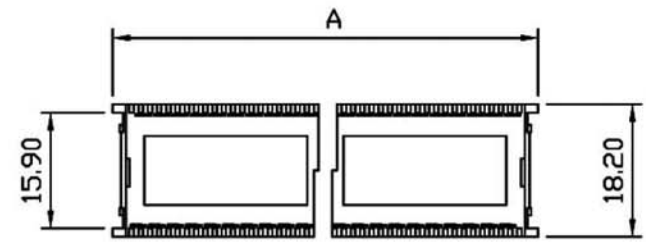
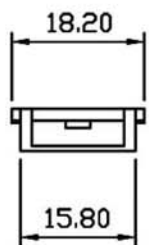
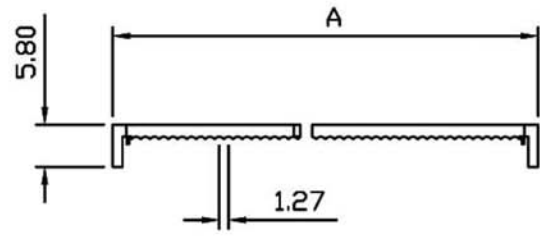
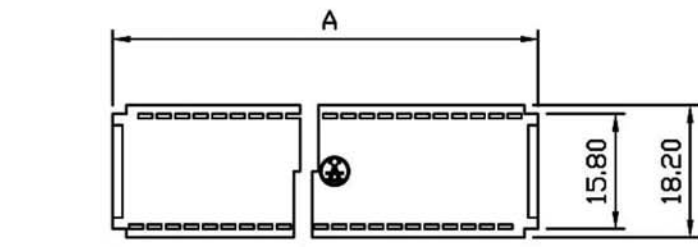


MATERIALS:
 INSULATOR: P.B.T. 30% GLASS FIBER, UL 94V-0
 CONTACTS: BRASS OR PHOSPHOR BRONZE,
 UNDERPLATE: NICKEL
 CONTACT AREA: 1u"~30u" SELECTIVE GOLD
ELECTRICAL:
 CURRENT RATING: 1AMP.
 INSULATION RESISTANCE: 1000MΩ MIN.
 DIELECTRIC WITHSTANDING: 500VAC
 OPERATING TEMPERATURE: -55°C~+105°C

ADIPX-X-LC-R

Z Tin Plated
 G Gold Plated
 Number of Contacts
 08/10/14/16/20/24/28/40

POSITION	A	B
24P	35.73	27.94
28P	40.81	33.02
32P	45.89	38.10
36P	51.00	43.18
40P	56.20	48.26



UNLESS OTHERWISE SPECIFIED TOLERANCE		±0.2		
SCALE: AS SHOWN	UNIT: mm			
DRAWN: JOE	12/19/05	DRAWN NAME:		DIP PLUG (PITCH: 2.54mm) 1/3
CHECKED: / /	/ /	PRODUCT NO. ADIPX-x-LC-R		
A	ECN-0512105(Emily)	12/14/05	APPROVED: / /	FILE NAME:
REV.	DESCRIPTION	DATE	SIZE A4	REV. A